

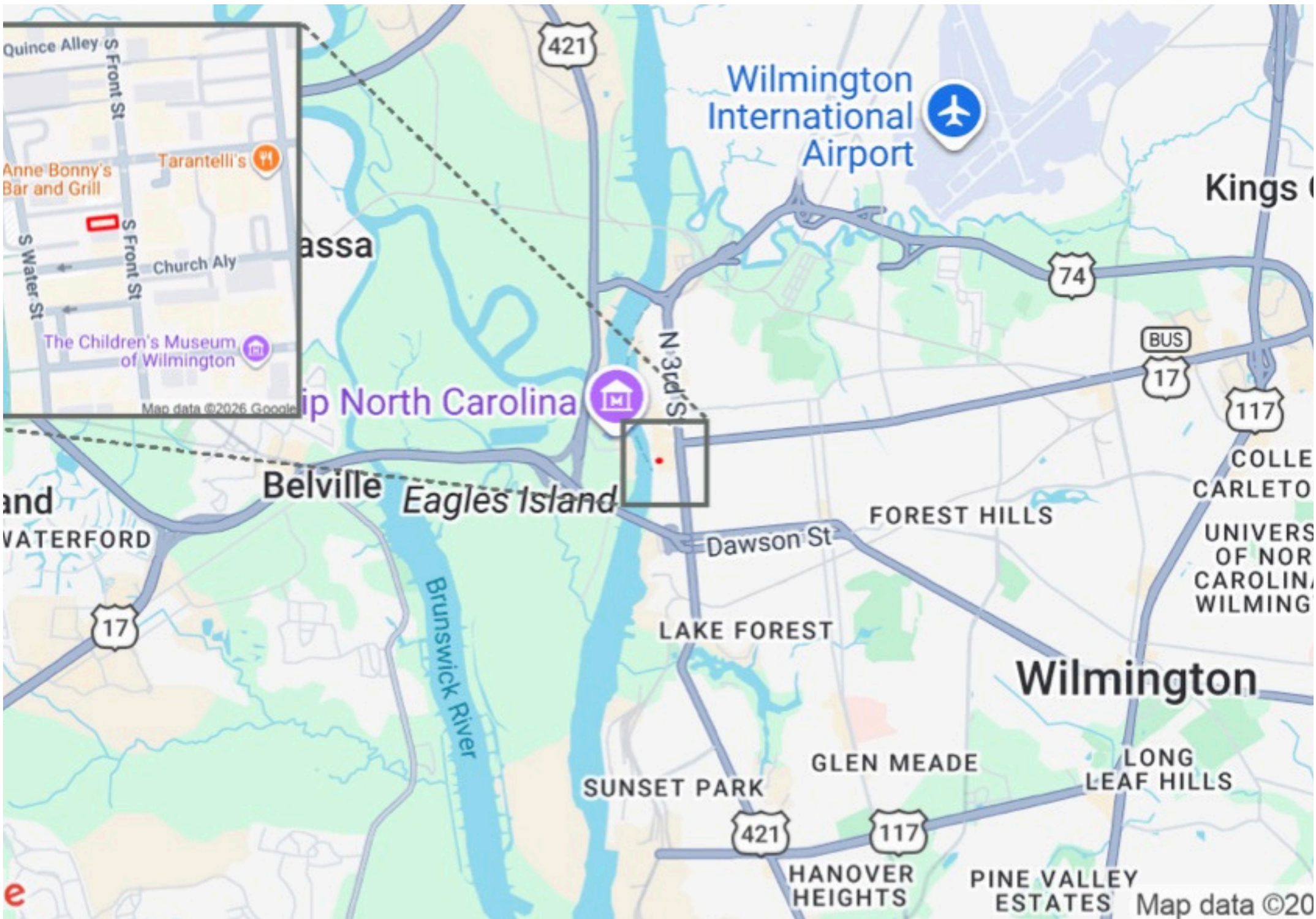
FOR LEASE: 900+/- SF RETAIL/OFFICE SUITE

110 South Front Street
Wilmington, NC 28401



David Branton
704.740.8184
David@osprey-cre.com

Osprey Commercial Real Estate
P.O. Box 10075, Wilmington, NC 28404
www.osprey-cre.com



PROPERTY SUMMARY

ADDRESS	110 South Front Street
UNIT SIZE	900 +/- Square Feet
LEASE RATE	\$2,500 Per Month
LEASE TYPE	Modified Gross
ZONING	CBD - Central Business District

This 900 +/- SF suite was formerly home to Gateway Mortgage.

Downtown Wilmington street frontage offers access to both pedestrian and the motoring public.

Unit offers downstairs work space and restroom with additional mezzanine office

Unit available immediately



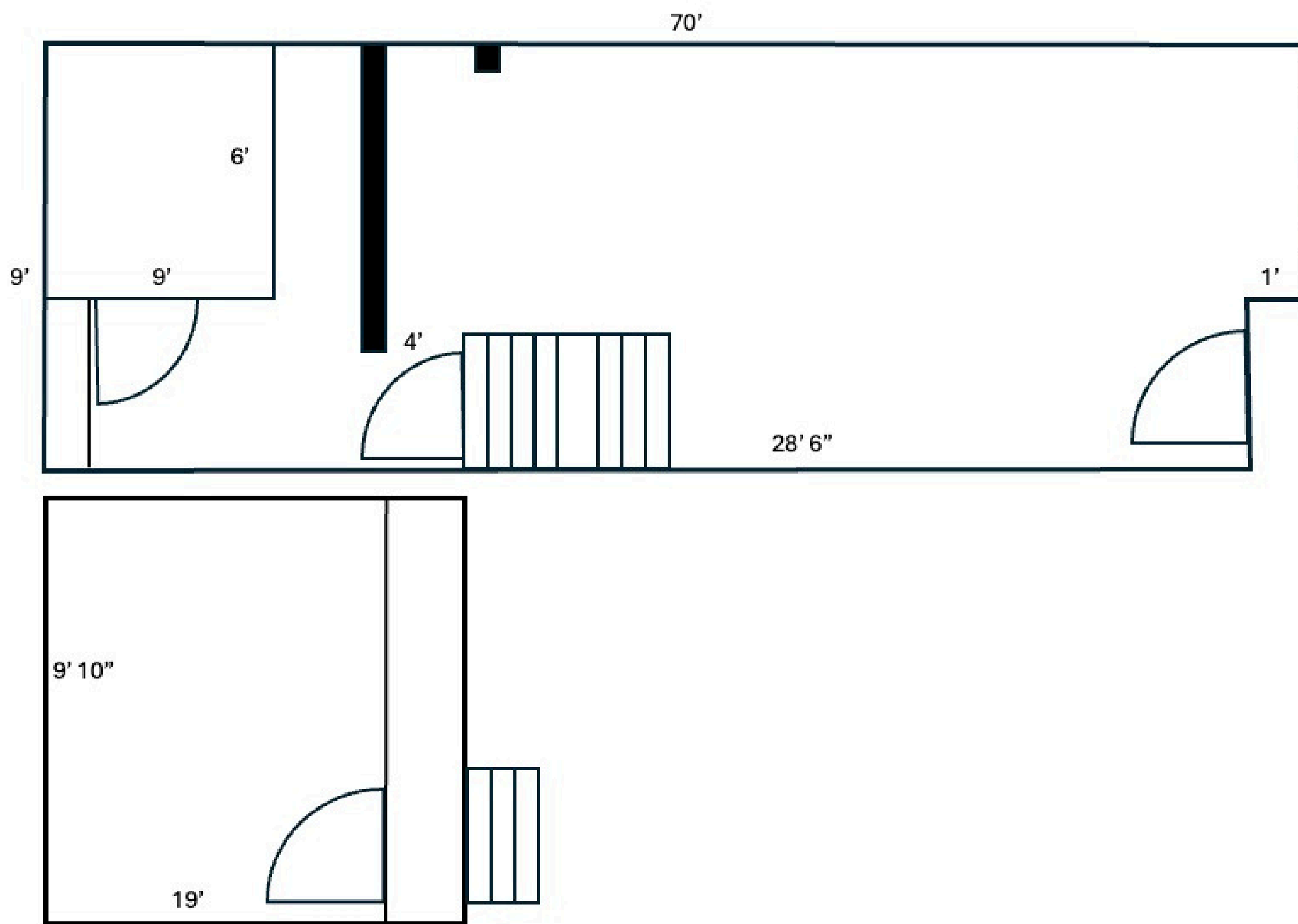
David Branton
 704.740.8184
 David@osprey-cre.com

Osprey Commercial Real Estate
 P.O. Box 10075, Wilmington, NC 28404
 www.osprey-cre.com



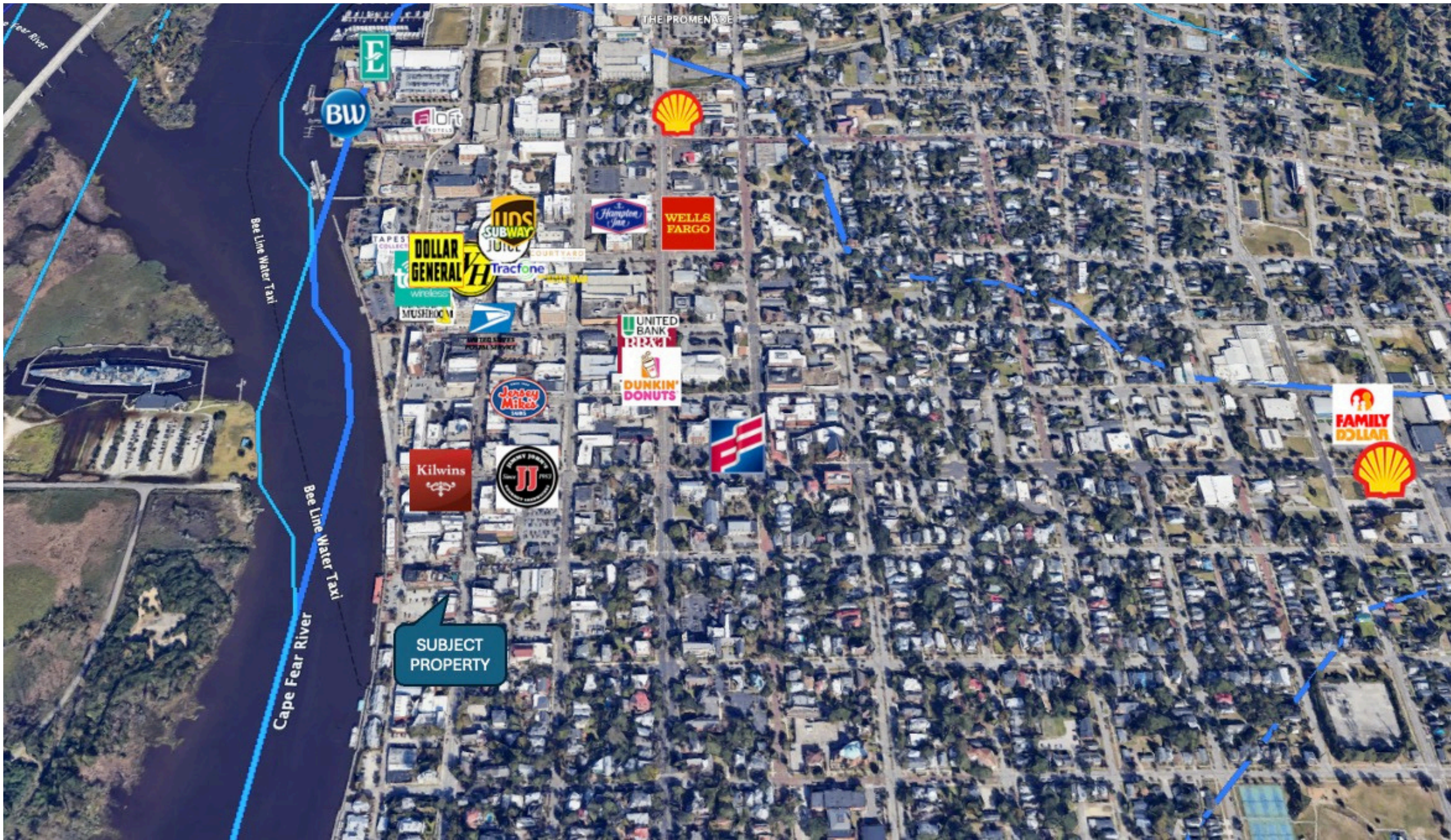
David Branton
704.740.8184
David@osprey-cre.com

Osprey Commercial Real Estate
P.O. Box 10075, Wilmington, NC 28404
www.osprey-cre.com



David Branton
 704.740.8184
 David@osprey-cre.com

Osprey Commercial Real Estate
 P.O. Box 10075, Wilmington, NC 28404
 www.osprey-cre.com



David Branton
704.740.8184
David@osprey-cre.com

Osprey Commercial Real Estate
P.O. Box 10075, Wilmington, NC 28404
www.osprey-cre.com

FOR ADDITIONAL INFORMATION OR TO SET UP A TOUR
PLEASE CONTACT BROKER LISTED BELOW



David Branton
704.740.8184
David@osprey-cre.com

Osprey Commercial Real Estate
P.O. Box 10075, Wilmington, NC 28404
www.osprey-cre.com